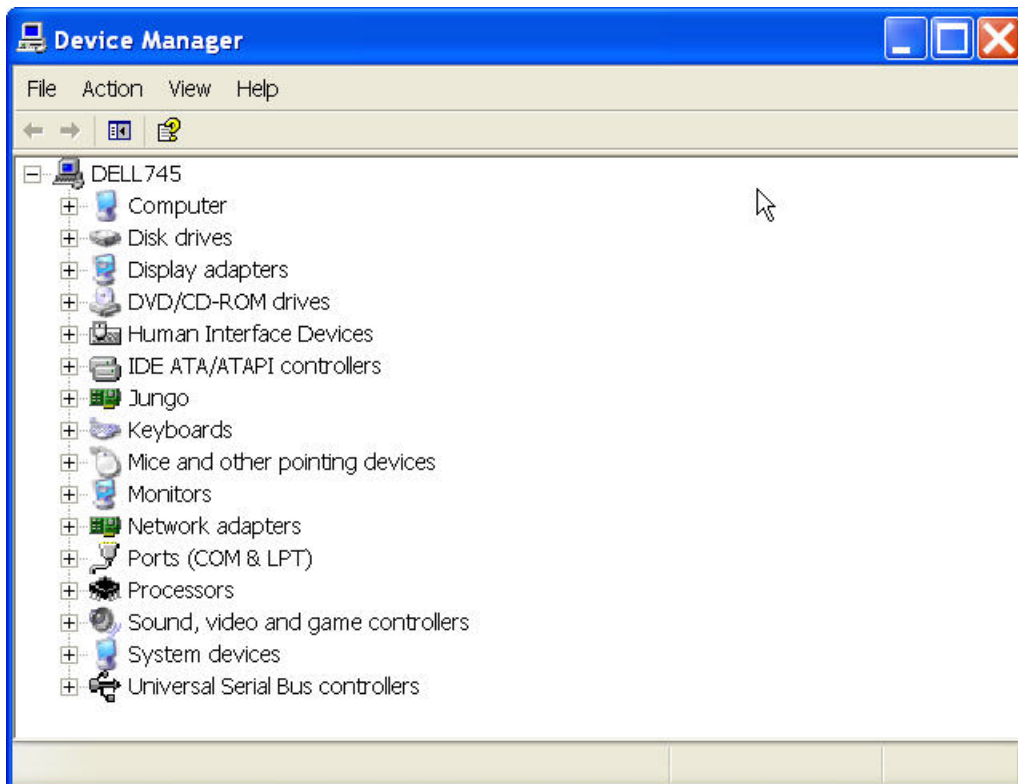


S2USB485 Device Driver Removal Instructions

Sadly, Windows has a number of issues with regards to Device Driver updating or removing. To update the S2USB485 device drivers, please remove your existing drivers first, then perform the Device Driver installation as before using the latest device drivers.

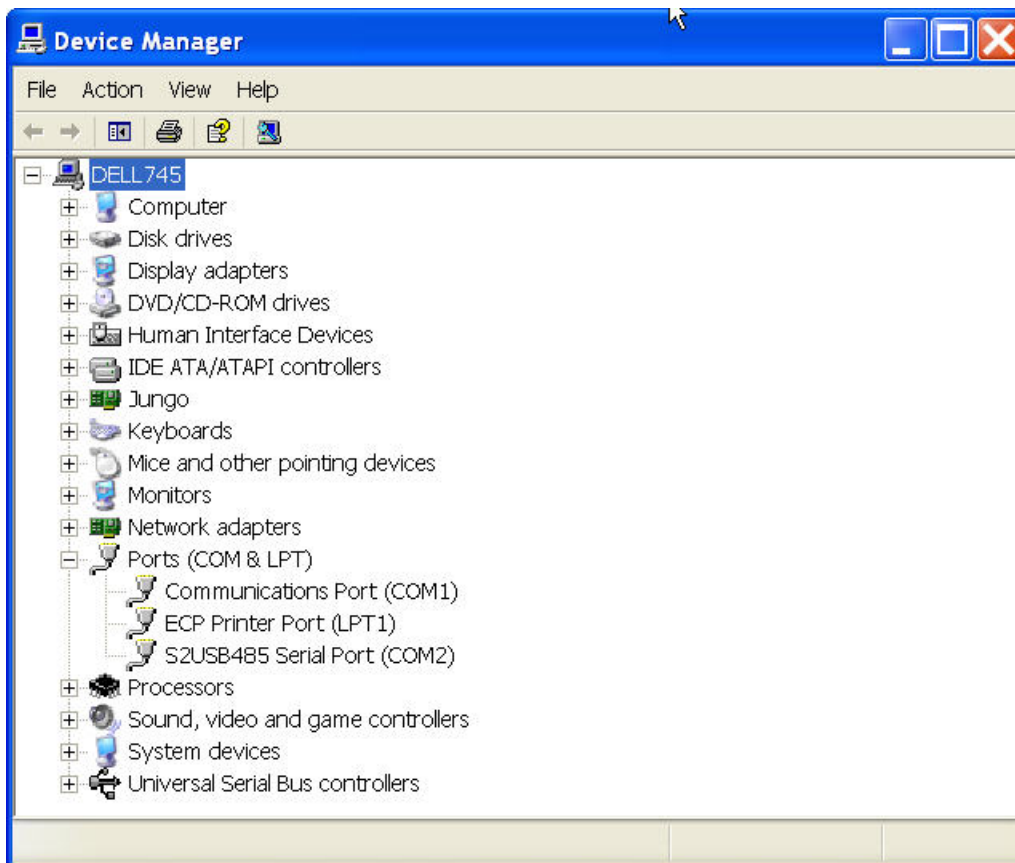
To Remove the S2USB485 Device Drivers do the following:

1. Right-click My Computer and select Properties or open control panel (Start-Settings-Control Panel) and double click System
2. Click tab Hardware, click button Device Manager.

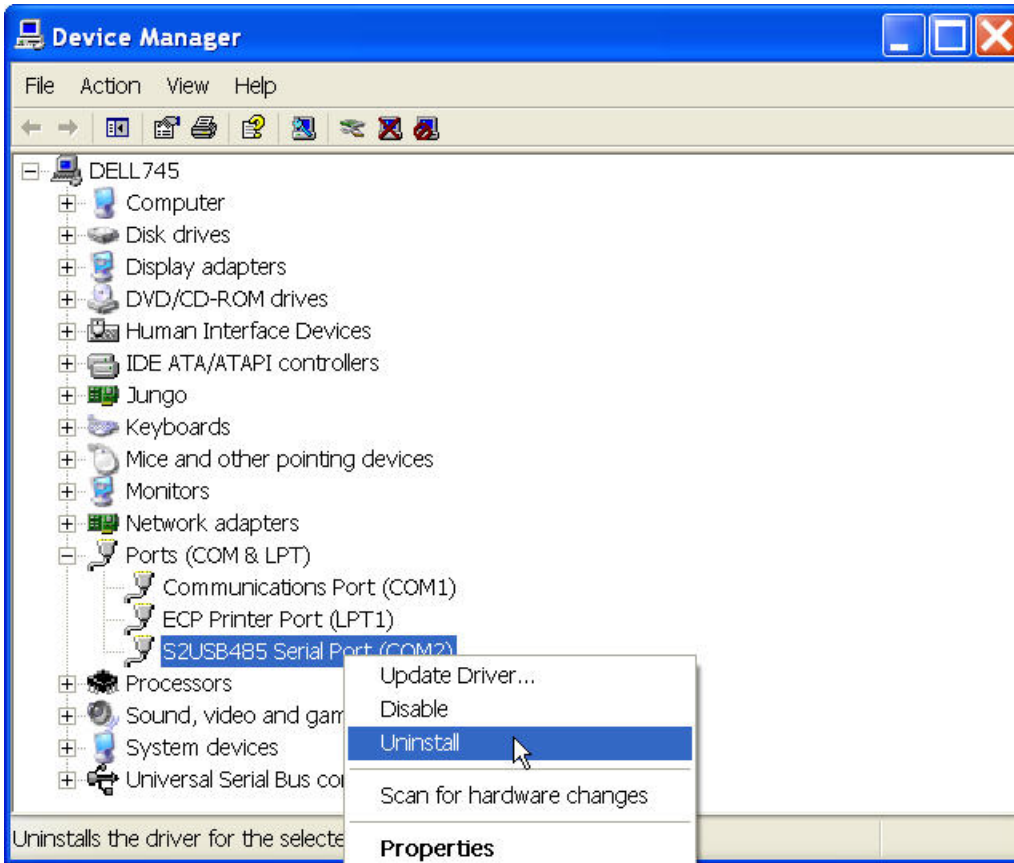


Rev 1.0 – December 31, 2008

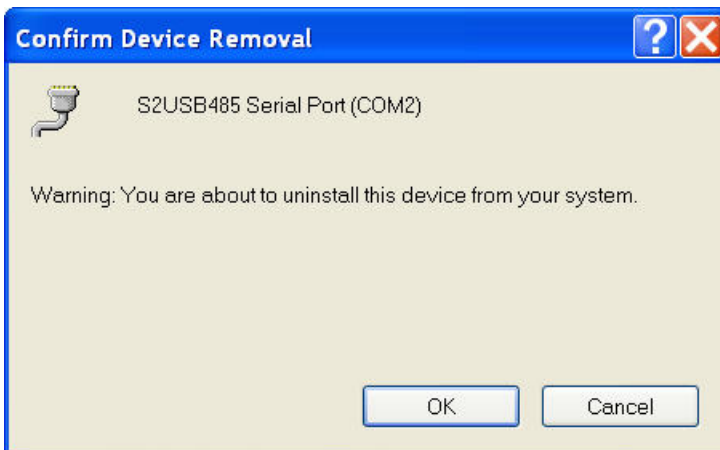
3. Expand the **Ports (COM & LPT)** Entry:



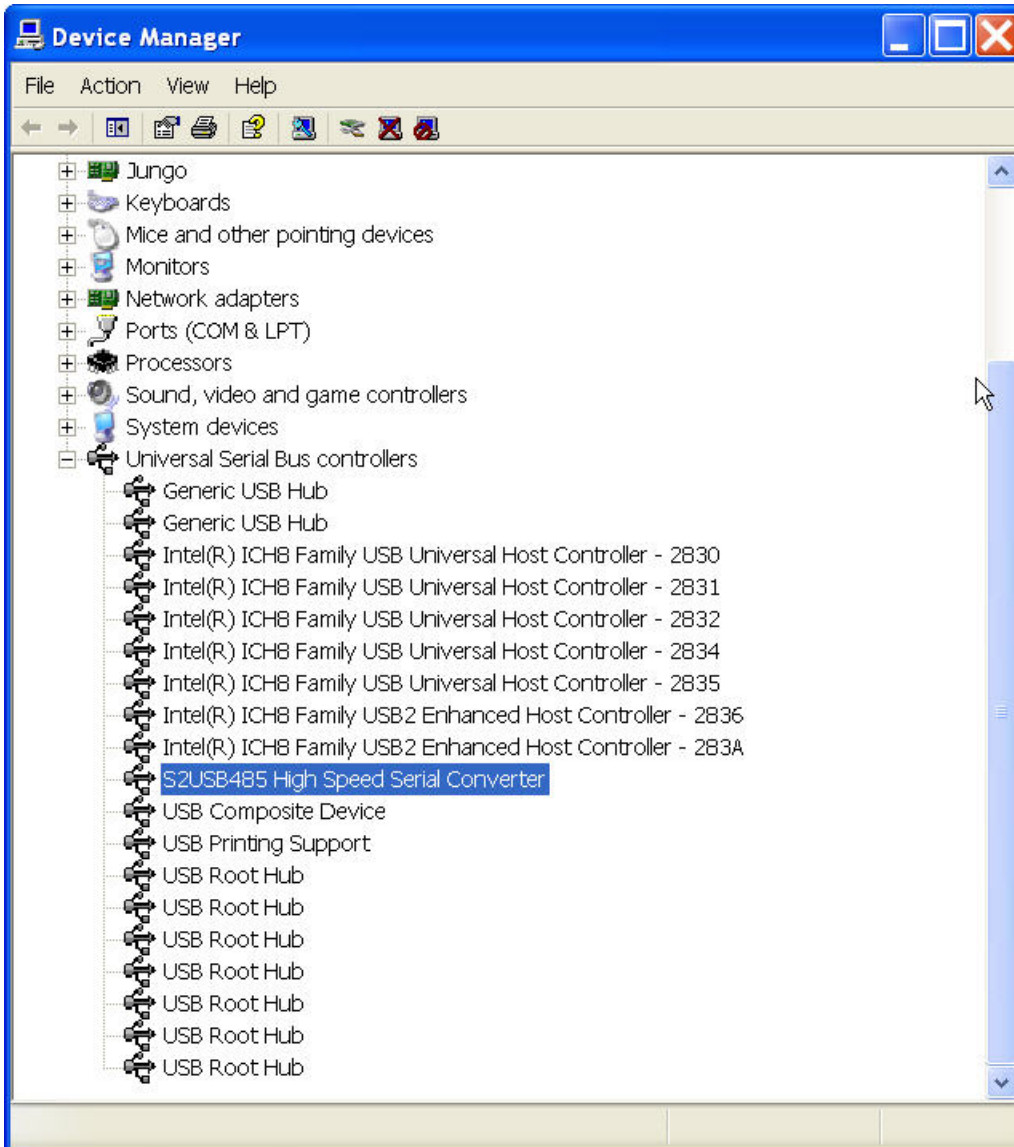
4. Left mouse-click on the S2USB485 device and right-click on “Uninstall”



4. Press “OK” to Confirm the Uninstall

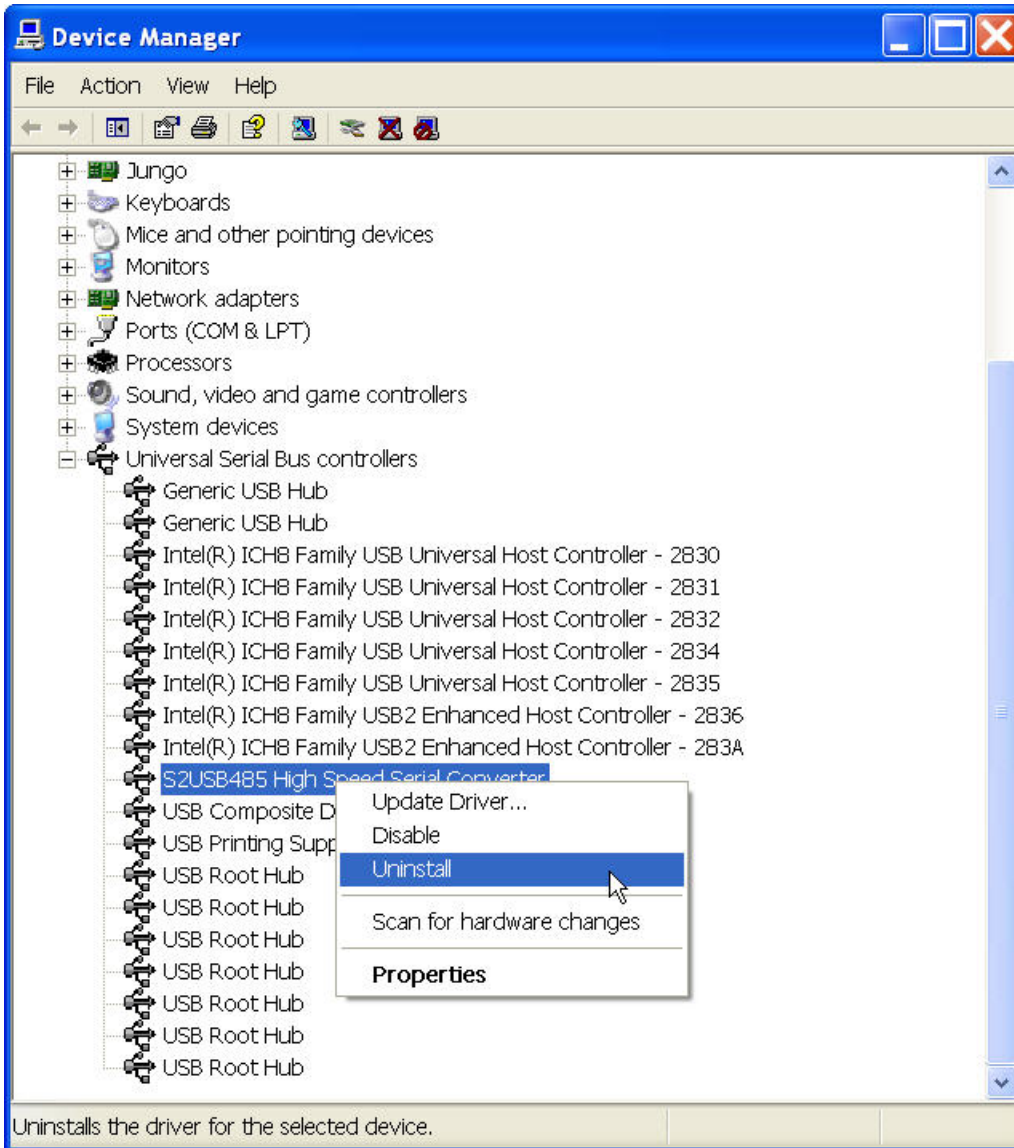


5. Now, expand the **Universal Serial Bus controllers** Entry.

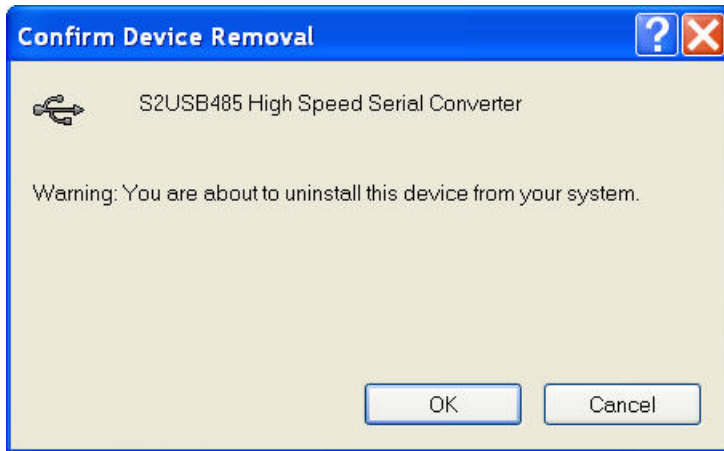


Rev 1.0 – December 31, 2008

6. Left mouse-click on the **S2USB485** Entry and right-click on “Uninstall”

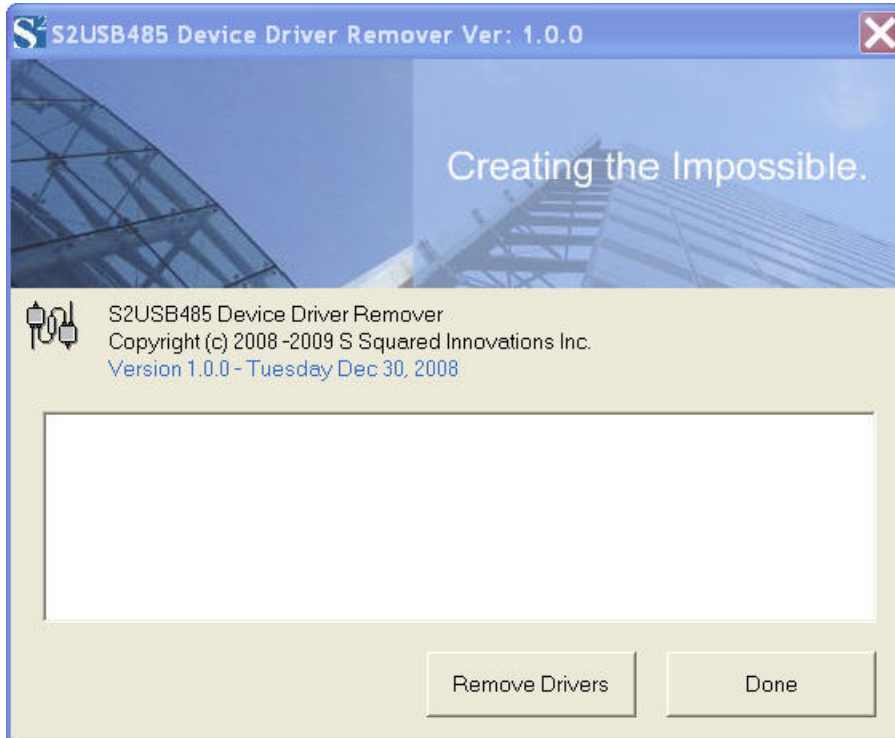


7. Press “OK” to Confirm the Uninstall



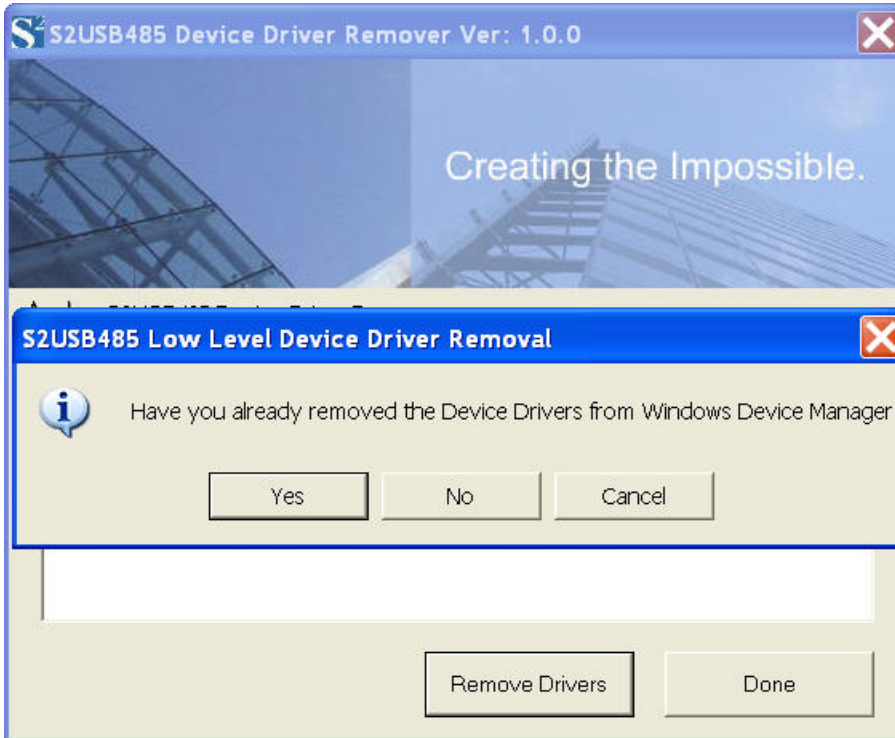
Rev 1.0 – December 31, 2008

8. Now, **remove/unplug** the S2USB485 device from your system
9. Download the S2USB485 Device Driver Remover Setup Program from our website:
<http://www.s2innovations.com/content.php?id=15>
10. Run the SetupS2USB485Remove.exe and install the application.
11. Run the S2USB485 Driver Remover by selecting Start-Programs-S Squared-S2USB485 Device Driver Remover and press the “Remove Drivers” button.

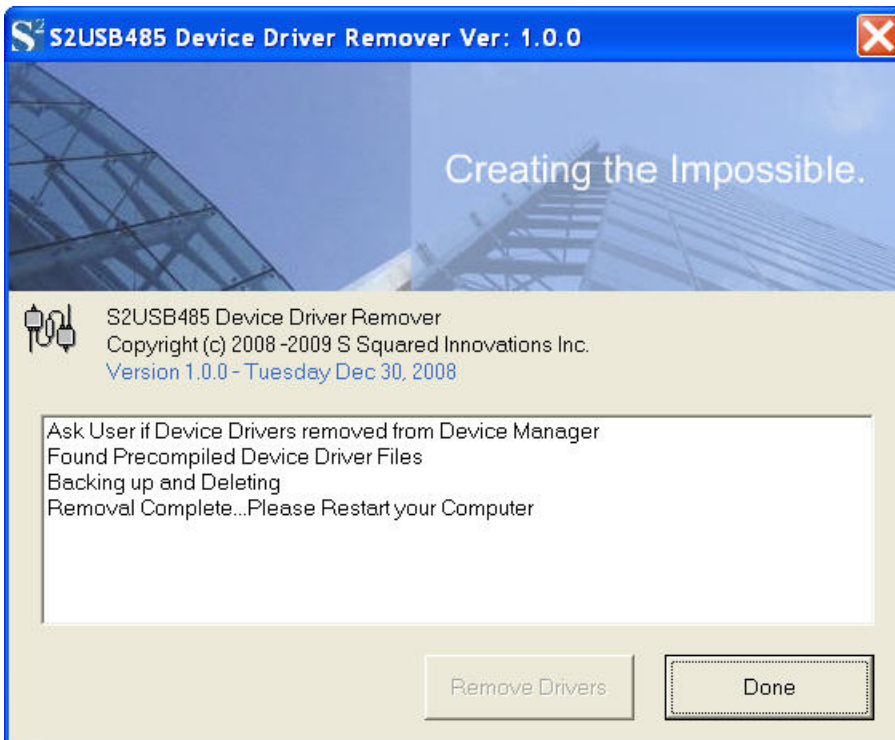


Rev 1.0 – December 31, 2008

12. You will be reminded to remove the Device Drivers from Windows Device Manager (steps 1 through 8 above). If you have already done this, and press the “Yes” button and the removal process will continue.



13. If the removal was successful, you should see the following:



Rev 1.0 – December 31, 2008

14. Pressing the “Done” button will close the application and you are now finished removing the drivers.

15. Now, restart your computer and install the S2USB485 device as before, but this time using the new/latest drivers.

Rev 1.0 – December 31, 2008